

**BEFORE YOU GO:  
HOW TO CHECK  
ACCESSIBILITY AT  
FLORIDA BEACHES,  
PARKS, AND EVENTS**





# Accessibility Questions to Ask

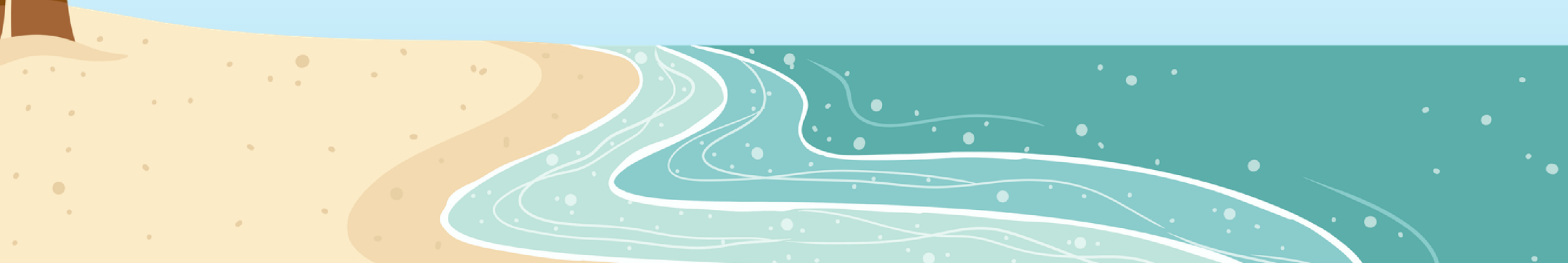
## BEFORE YOU GO TO A FL BEACH

Is a beach wheelchair available, and does it need to be reserved in advance?

Where do I pick it up, and what hours is it available?

Is there a hard surface route (mat, boardwalk, ramp) toward the water?

Does that route reach the water, or stop before the sand gets soft?





# Accessibility Questions to Ask

## BEFORE YOU GO TO A FL BEACH

How far is accessible parking from the beach access point?

Are accessible restrooms and rinse stations near the access point?

Who can I contact the day of my visit if equipment is missing or locked?





# Accessibility Questions to Ask

## BEFORE YOU GO TO A FL PARK OR TRAIL

- Which trails or routes are actually accessible, and what is the surface?
- How long is the accessible route, and are there shaded rest areas?
- Are accessible restrooms near the trail, picnic area, or playground?





# Accessibility Questions to Ask

## BEFORE YOU GO TO A FL PARK OR TRAIL

Is accessible parking near the activity, not just near the entrance?

Does the park have track chairs, EcoRovers, or other adaptive equipment?

Is that equipment free, and does it need to be reserved?





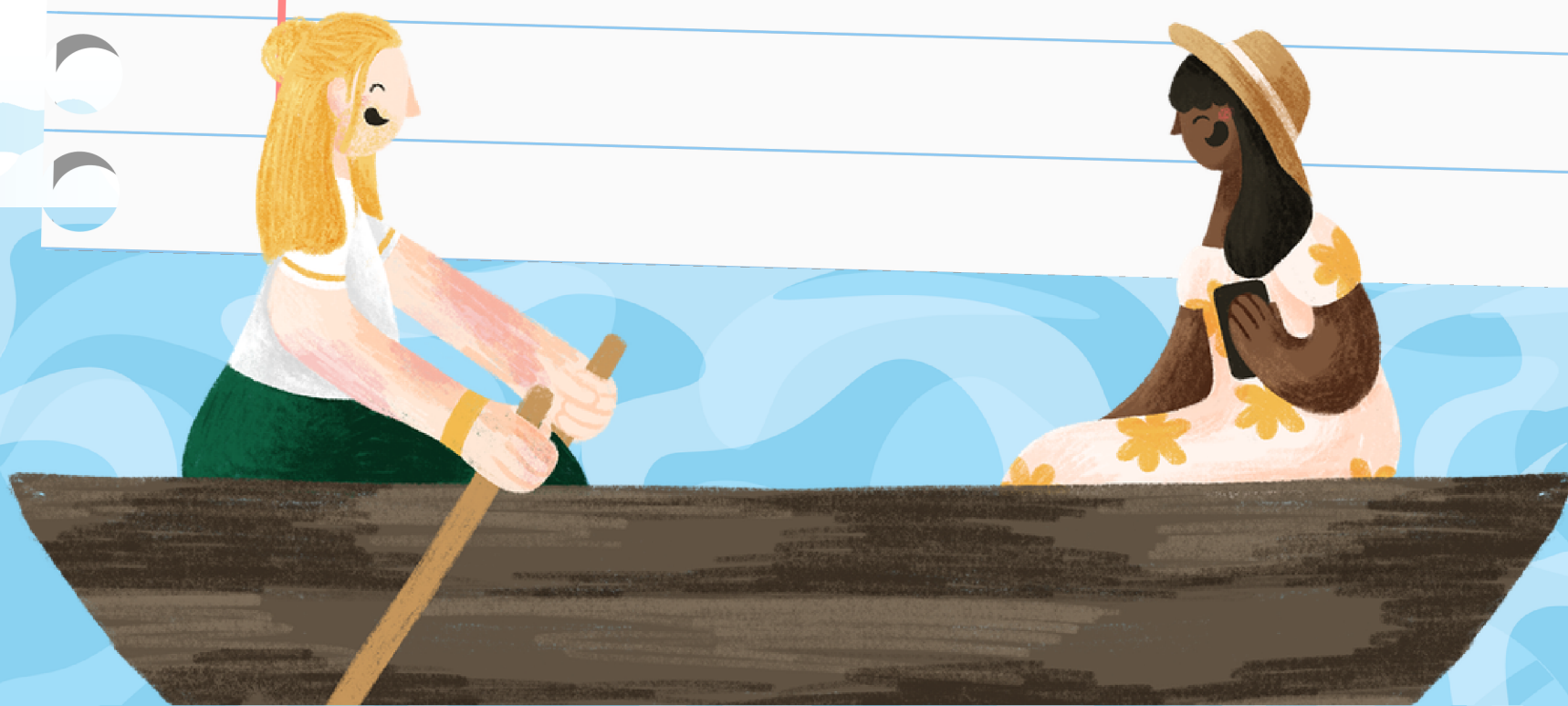
# Accessibility Questions to Ask

## BEFORE YOU GO TO A FL SPRING

Is there an accessible route from parking to the spring area, and what's the surface?

Are aquatic wheelchairs available, and do they need to be reserved?

Are there transfer steps, ramps, or lifts into the water?





# Accessibility Questions to Ask

## BEFORE YOU GO TO A FL SPRING

- Is there an accessible dock, viewing area, or boat tour route?
- Are accessible restrooms and changing areas near the swimming area?
- Are there capacity limits or arrival rules that could affect access?





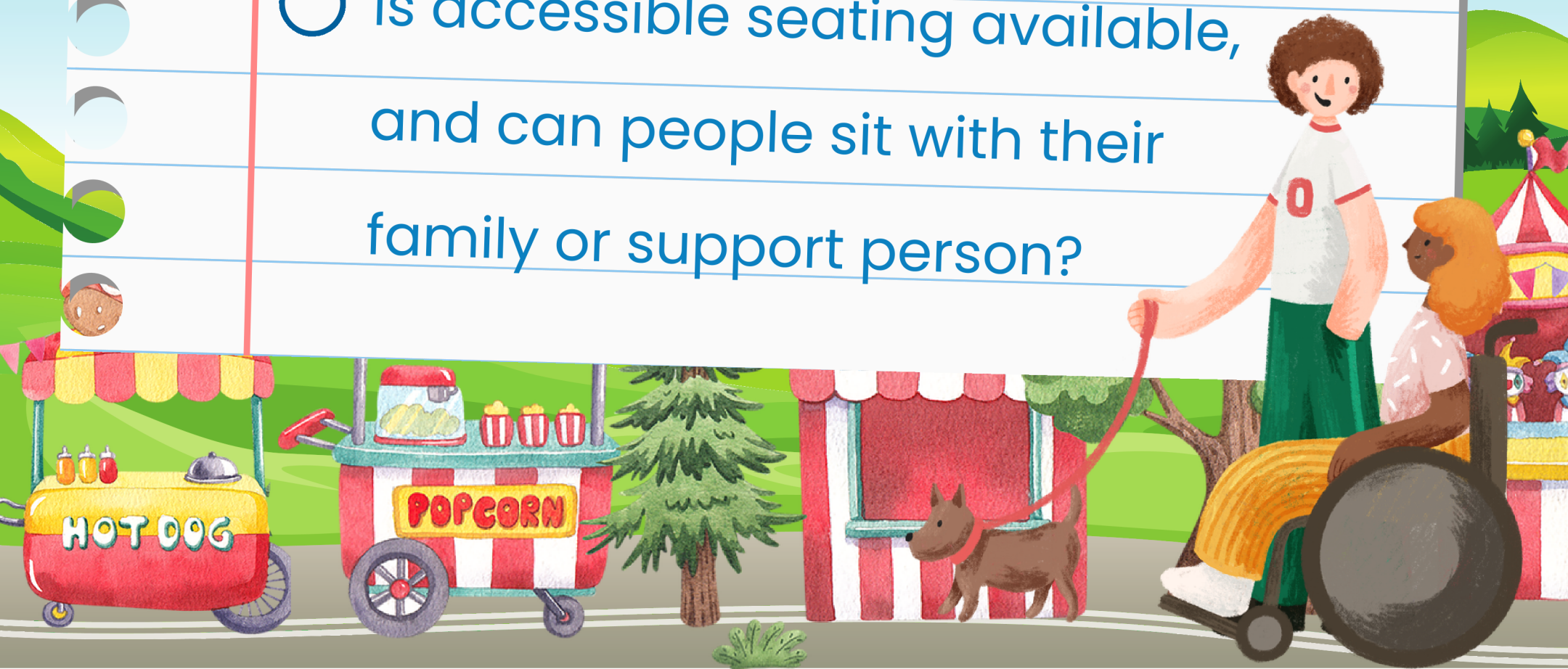
# Accessibility Questions to Ask

## BEFORE YOU GO TO A FESTIVAL, FAIR, OR MARKET

Is there an accessible route from parking, drop-off, or transit to the entrance?

Are accessible portable restrooms available, and where are they located?

Is accessible seating available, and can people sit with their family or support person?





# Accessibility Questions to Ask

## BEFORE YOU GO TO A FESTIVAL, FAIR, OR MARKET

- Are sign language interpreters or captions available on request, and what's the deadline?
- Are sensory-friendly hours, quieter areas, or low-crowd options offered?
- Who is the accessibility contact before and during the event?

